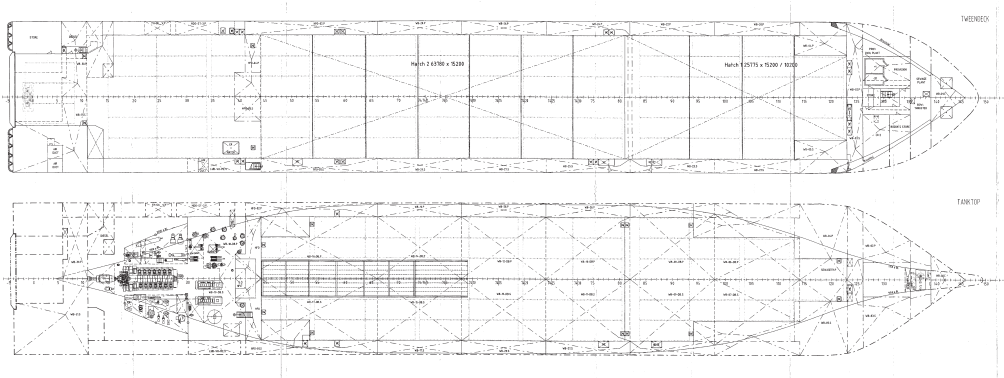


## Sloman Producer

Year built	2004
Type	RoRo/LoLo
LOA / LBP	121,66 m / 115,40 m
Breadth	18,70 m
Draft	7,17 m
DWT	8.210 t
Cap. (Bale)	13.450 m <sup>3</sup>
GRT / NRT	7.260 / 3.906
Holds	2
Cranes	2 cranes, SWL 60 t each combinable up to 72 t
Speed	abt. 13,5 knts
<b>Consumption</b>	
pd at Sea	abt. 20 t IF 380
pd in Port	abt. 2 t GO
<b>Container intake</b>	
TEU + FEU	783 + 0
FEU + TEU	348 + 87
Homo. (14 t)	427 TEU
Reefer	40 on Deck



### SLOMAN NEPTUN Schiffahrts-Aktiengesellschaft

Langenstraße 44 · 28195 Bremen/Germany

Phone +49 (0) 421 17 63-0 · Fax +49 (0) 421 17 63-321

E-Mail [info@sloman-neptun.com](mailto:info@sloman-neptun.com) · Internet [www.sloman-neptun.com](http://www.sloman-neptun.com)

